

sustainable  
sanitation  
alliance



# Unravelling the MagiCube

## Kenya's approach to up-scaling urban water & sanitation

Water Sector Trust Fund, Kenya  
GIZ Water Sector Reform Programme, Kenya  
Sustainable Sanitation Alliance (SuSanA)



Financial Support for improved Access to Water and Sanitation  
P.O. Box 49699-00100 Tel: (020) 272 9071, 16, 19 EMail: [info@waterfund.go.ke](mailto:info@waterfund.go.ke) Site [www.waterfund.go.ke](http://www.waterfund.go.ke)



Implemented by

**giz** Deutsche Gesellschaft  
für Internationale  
Zusammenarbeit (GIZ) GmbH

# Urban water & sanitation in Kenya

**46 million**  
inhabitants  
in **KENYA**



**Urban Population**



**2,000**  
Low Income Areas

## Urban Access

**SANITATION**

only **15%** of the urban population is connected to **sewers**

**23%** has **no access to improved sanitation** (basic or shared)

**WATER**

only **69%** of the population has **access to formal water supply**

The number of underserved urban dwellers increases every year.



ISO 9001:2008 CERTIFIED



# 'to ensure availability & sustainable management of water & sanitation for all'

*by 2030*



ISO 9001:2008 CERTIFIED

Financial Support for Improved Access to Water and Sanitation

PO Box: 49699-00100 Tel: (020)2729071, 16,19 Email: [info@waterfund.go.ke](mailto:info@waterfund.go.ke) Site: [www.waterfund.go.ke](http://www.waterfund.go.ke)



# Role of WSTF in Kenyan water sector



WSTF is a State Corporation mandated to finance water and sanitation services for the poor and underserved communities in rural and urban areas



Urban Investments



Water supply in urban low income areas



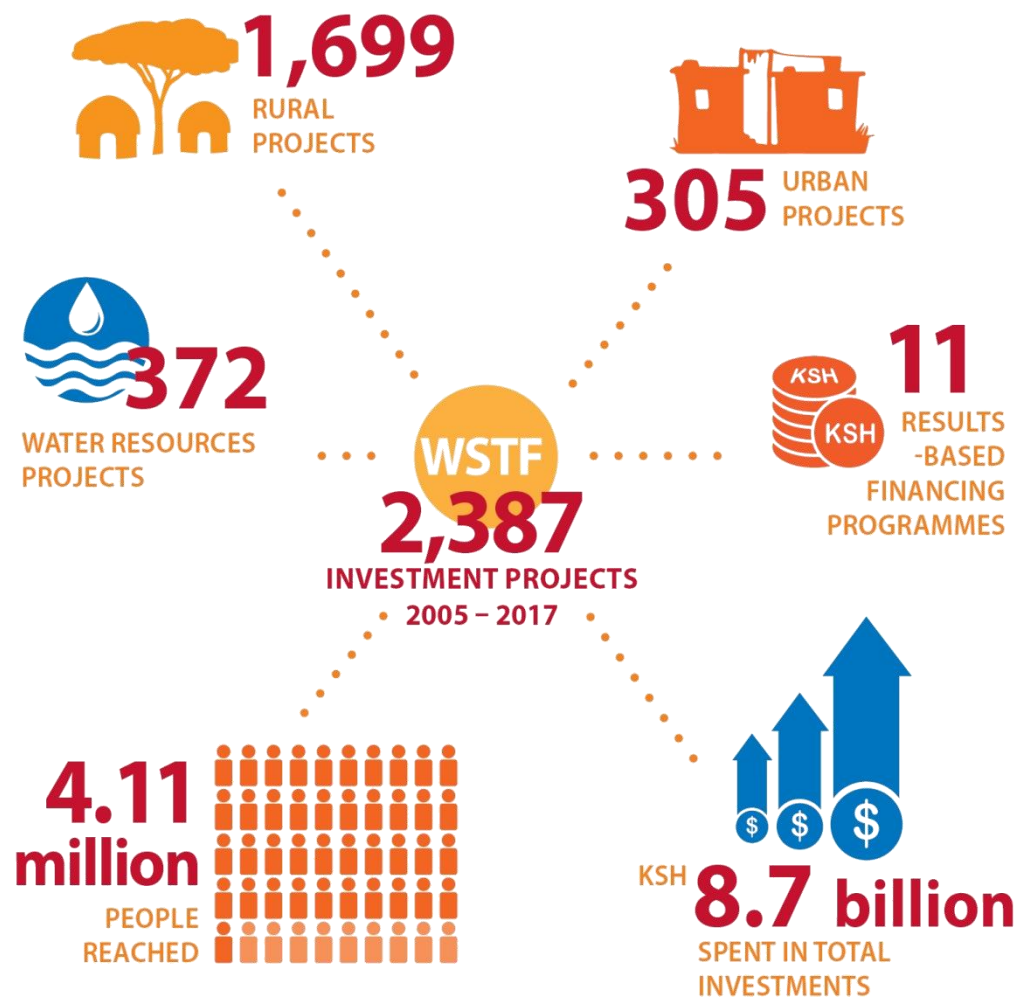
Public toilets, promotion of improved households sanitation along the entire sanitation chain, funding of decentralized wastewater treatment facilities



ISO 9001:2008 CERTIFIED

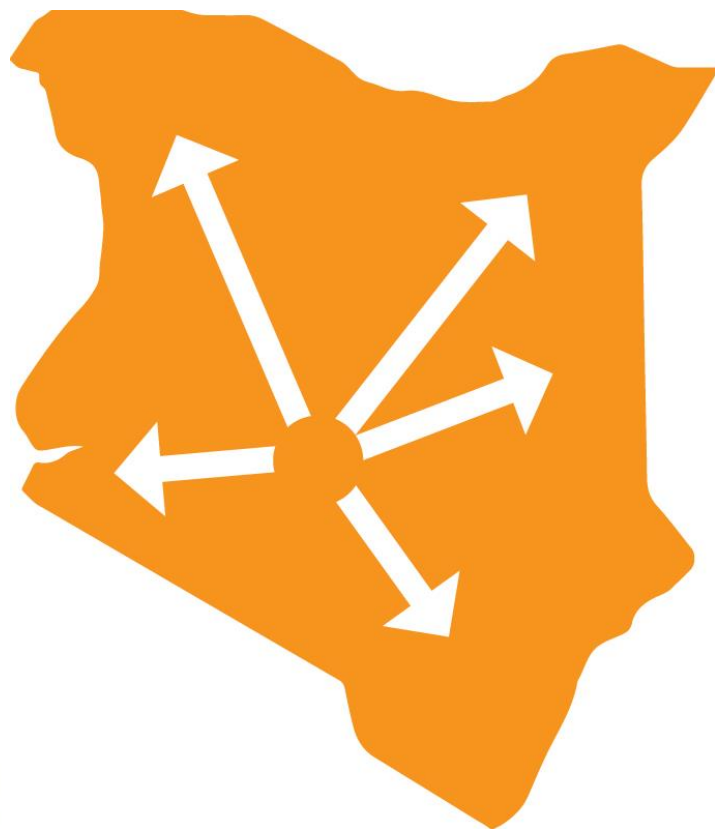
Financial Support for improved Access to Water and Sanitation  
P.O. Box 49699-00100 Tel: (020) 272 9071, 16, 19 EMail: [info@waterfund.go.ke](mailto:info@waterfund.go.ke) Site [www.waterfund.go.ke](http://www.waterfund.go.ke)

# WSTF achievements



ISO 9001:2008 CERTIFIED

# WSTF achievements



WSTF funded investments  
contributed **40%** of the national  
increase in access to urban  
water supply and sanitation  
(between 2006 – 2013)

*Source: WASREB Impact Report; WSTF Maji Insight Report; MWI Annual Sector Review*



ISO 9001:2008 CERTIFIED

Financial Support for improved Access to Water and Sanitation

P.O. Box 49699-00100 Tel: (020) 272 9071, 16, 19 EMail: [info@waterfund.go.ke](mailto:info@waterfund.go.ke) Site [www.waterfund.go.ke](http://www.waterfund.go.ke)



# How do we provide **access to water & sanitation at scale?**



Good sanitation is every  
Kenyan's right



Financial Support for Improved Access to Water and Sanitation

PO Box 49699-00100 Tel: (020)2729071, 16,19 Email: [info@waterfund.go.ke](mailto:info@waterfund.go.ke) Site: [www.waterfund.go.ke](http://www.waterfund.go.ke)

# The modules of the MagiCube – Kenya's approach to up-scaling

Tools & standards for last mile access solutions



5. Access to water



6. Sanitation chain

Implementation mechanisms



3. Information systems



4. Financing

Foundations of scaling up



1. Sector framework



2. Implementing actors



ISO 9001:2008 CERTIFIED



# Join us in unravelling the MagiCube



ISO 9001:2008 CERTIFIED

Financial Support for improved Access to Water and Sanitation

P.O. Box 49699-00100 Tel: (020) 272 9071, 16, 19 EMail: [info@waterfund.go.ke](mailto:info@waterfund.go.ke) Site [www.waterfund.go.ke](http://www.waterfund.go.ke)